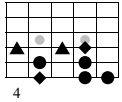


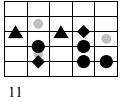
A-Moll-melodisch, Typen-TL (1 Okt.), 6. und 7. Ton im Vgl. zu reinem Moll erhöht

GT 6. Saite / V. Lage



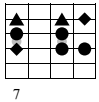
IV. L. V. L.

GT 5. Saite / XII. Lage

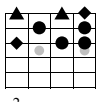


XI. L. XII. L.

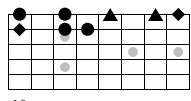
GT 4. Saite / VII. Lage



GT 3. Saite / II. Lage



GT 2. Saite / X. Lage



IX. L. X. L.