

C-Dur-TL im Vergleich zur C-Dur-Pentatonik (ohne HT, Dur-3Klang c-e-g bleibt)

♩ = 60

1.) C-Dur-TL, I. L.

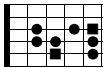
c d e f g a h c' c' h a g f e d c

n. guit.

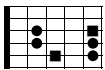
C-Dur-Pentatonik, I. L.

c d e g a c' c' a g e d c

2.) C-Dur-Typen-TL, II. L.



C-Dur-Pentatonik, Typen-TL, II. L.



3.) C-Dur-Typen-TL, V. L.



C-Dur-Pentatonik, Typen-TL, V. L.

